

DUAL-SIDED COLOR CARD PRINTERS FOR HIGH QUALITY, DURABLE, SECURE CARDS

If you need to print high quality, edge-to-edge graphics on smart cards, or laminate clear or high security holographic foil over top-security ID cards, **engenyus** has the range of high tech, high security colour card printers for your needs.

CX210: a new generation of card printer designed especially to print onto contactless and contact smart cards manufactured using a range of different materials.

The unique retransfer process ensures that uneven surfaces are covered without blemish.

Javelin 520 & 720: dual-sided printers with in-line lamination.

Laminating cards considerably increases card life, card durability, and prevents counterfeiting, alteration, or fraudulent duplication of cards. Lamination can extend card life by 2 to 7 years and is ideal where high security is a requirement or where there is frequent usage by the cardholder.

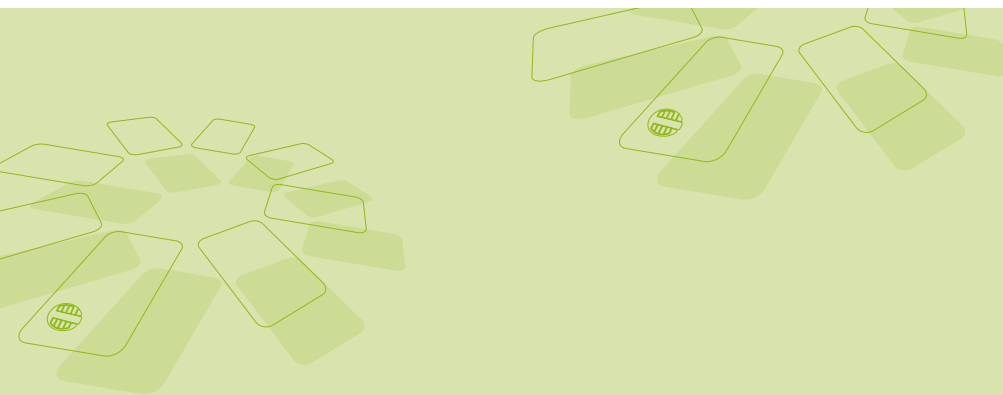
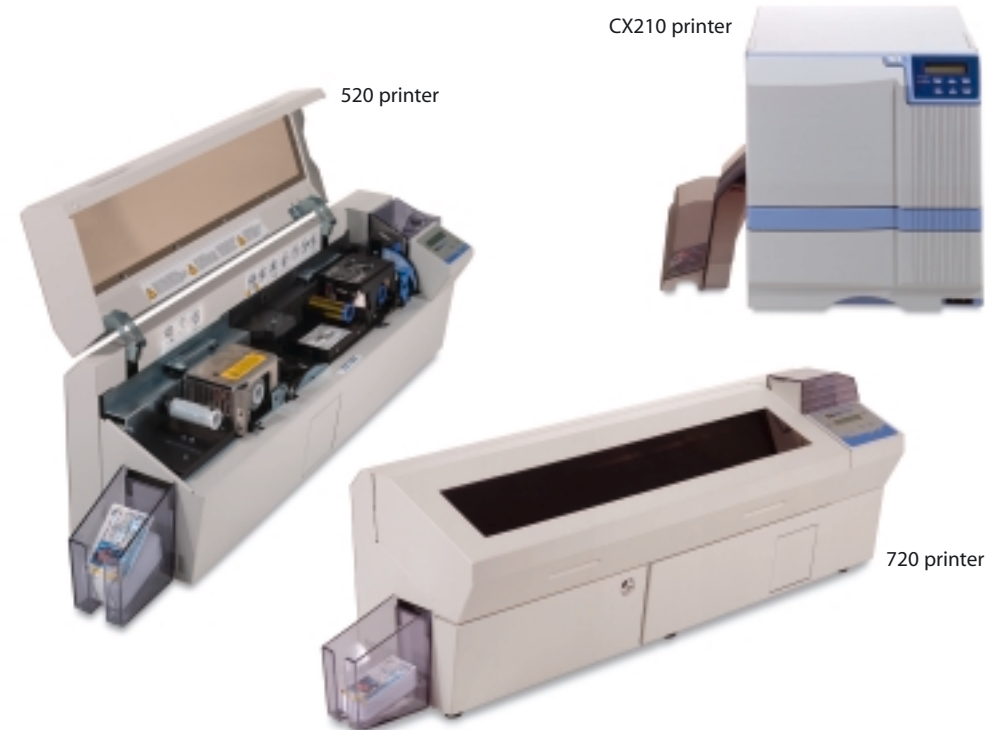
The 520 has dual-sided full colour printing and either 0.6 or 1 mil lamination on the card face.

The P720's wasteless and linerless lamination system simultaneously laminates the front and back of each card in one pass.

Both the 520 & 720 feature a rugged metal enclosure with viewing window, and use a highly reliable, field-proven print engine.

Javelin™ Secure

Colour card printers



J A V E L I N

Javelin™ secure printers

Technical details

CX210 retransfer printer

FEATURES:

- Built-in flipover unit
- Hopper capacity: 300 cards (0.76mm)
- Stacker capacity: 100 cards (0.76mm)
- Wide range of applicable card thickness
- Dual coercivity magnetic stripe encoding – optional
- Contact smart card encoding – optional
- Contactless card encoding – optional

SPECIFICATIONS:

Printing method	Dye sublimation re-transfer
Resolution	300 dpi
Printable area	Full bleed
Standard ink ribbon	YMCK-OP/ Intermediate transfer films; 1000 sides per set
Interface	SCSI - II
Print speed	29 seconds/card
Operating environment	15 - 30°C
Hopper capacity	35 - 70% relative humidity
Stacker capacity	300 cards (0.76mm thick)
Signal level	100 cards (0.76mm thick)
Dimensions (W x D x H)	256 levels per colour
Weight	343 mm x 339 mm x 381 mm
	21.5 kg

CARD SPECIFICATIONS:

- PVC and other plastic materials
- Size: 54mm (W) x 85.6mm (L), wide range of applicable card thickness

520 & 720 printers

GENERAL SPECIFICATIONS:

- High speed printer with built-in laminator (single pass, wasteless, dual-sided laminator in 720)
 - YMCK & 1.0 mil lamination: 125 cards/hour
 - YMCK & 1.0 mil lamination: 110 cards/hour
 - YMCK-K & 1.0 mil lamination: 95 cards/hour (120 cards/hour dual-sided laminated on 720)
- Dual process system (while one card prints second card is laminated)
- Dual-sided printing with flip-over capability
- Card cooling system produces true ISO flatness of laminated cards
- Card Feeder Capacity (30 mil cards): 520 – 100 cards; 720 – 200 cards
- Metal enclosure with transparent viewing window
- Two-line 32 digit interactive menu driven control panel
- Encoded card reject hopper
- Windows® drivers for 95/98, NT, and 2000 (bi-directional communication)
- Centronics parallel and USB interface (standard)
- One year printer warranty with Hot Swap
- One year (unlimited passes) print head warranty
- Powerful printer command language

COLOUR PRINTING & LAMINATION:

- Colour dye sublimation or monochrome thermal transfer printing

- 300 dpi (12 dots/mm) print resolution
- 720: Enhanced fourth generation laminator with auto laminate synchronization

BAR CODES:

- Code 39, Code 128 B & C with & without check digit
- 2 of 5 & Interleaved 2 of 5
- UPC-A, EAN-8 & EAN-13
- PDF-417 2D bar code and other symbols available via Windows driver and application software

FONTS:

- Resident: Arial Normal 22, Arial Bold 28
- True Type fonts available via Windows driver

CARD SPECIFICATIONS:

- Types: PVC, Composite (use 30 mil Composite cards when laminating)
- Card width/length: ISO CR-80, 2.125" (54mm) x 3.385" (86mm)
- Card thickness: 0.76mm (30mil)

RIBBON SPECIFICATIONS:

- Monochrome: 1000 or 1500 cards/roll
- Monochrome colours: black, red, blue, green, yellow, silver, gold, white
- K resin O: 500 cards/roll
- K dye O: 500 cards/roll
- YMCK: 300 cards/roll
- YMCK: 250 cards/roll
- YMCKO: 200 or 350 cards/roll
- YMCKK: 200 cards/roll
- YMCKOK: 170 cards/roll

OVERLAMINATE SPECIFICATIONS:

- 520:**
 - 0.6 or 1.0 mil clear overlaminate: 170 (0.6 mil) & 100 (1.0 mil) cards/roll
 - 1.0 mil clear overlaminate for smart cards and magnetic stripe cards: 100 cards/roll
 - 1.0 mil overlaminate with standard or custom hologram: 100 cards/roll
 - 1.0 mil clear overlaminate (alternate full & mag stripe versions) 50 cards/roll

720:

- Linerless/wasteless laminate (1.0 mil)
- Upper/lower laminate cassettes: 800 cards
- Clear and holographic laminates available:
 - Full card coverage
 - For magnetic stripe cards
 - Matt coverage for signature panels
 - Standard and custom holograms

COMMUNICATIONS INTERFACE:

- Centronics Parallel standard (parallel cable included)
- USB standard (USB cable-not included)
- RS 232 serial port (option)

MECHANICAL:

- | | 520 | 720 |
|-----------|---------|-------|
| • Width: | 805mm | 835mm |
| • Depth: | 235mm | 277mm |
| • Height: | 265mm | 314mm |
| • Weight: | 21.45kg | 28kg |

ELECTRICAL:

- 100-250V, 50/60Hz
- FCC Class A, CE, UL and CUL approved

ENVIRONMENTAL:

- Operating temperature: 60°F to 86°F (15°C to 30°C)
- Operating humidity: 20% to 65% non-condensing
- Storage temperature: -23°F to 158°F (-5°C to 70°C)
- Storage humidity: 20% to 70% non-condensing
- Ventilation: Free air

OPTIONS:

- Smart card encoding
- Contactless (Mifare) smart card encoding
- Dual coercivity magnetic stripe encoding (top or bottom side)
- Cleaning supplies

Plastic Card Solutions Ltd

Graffix House
Bampton
Oxon
OX18 2NF

Tel: 08454 665 666

e-mail: sales@plasticcardsolutions.co.uk
www.plasticcardsolution.co.uk